

PL ISSN 0066-5924
INDEX 32597x (VAT 8%)
DOI: 10.23858/APa58.2020

Institute of Archaeology and Ethnology
Polish Academy of Sciences



Archaeologia Polona

vol. 58: 2020

Special theme:
PREHISTORY OF NORTH-EAST AFRICA
Volume dedicated to Prof. Michał Kobusiewicz
on his 80th birthday

Archaeologia Polona

Volume 58 : 2020

- Editor:** DAGMARA H. WERRA
- Associate Editor** MARZENA WOŹNY
- International Advisory Board:** Prof. PETER BOGUCKI – Princeton University, USA
Prof. MARTIN GOJDA – University of Western Bohemia, Pilsen, Czech Republic
Prof. ANTHONY HARDING – University of Exeter, Great Britain
Prof. MARIA IACOVOU – University of Cyprus, Nicosia, Cyprus
Prof. CAROLA METZNER-NEBELSICK – University of Munich, Germany
Prof. BJØRNAR OLSEN – University of Tromsø, Norway
Prof. GUIDO VANNINI – University of Florence, Italy
- Editors of the volume:** PRZEMYSŁAW BOBROWSKI AND MIROSŁAW MASOJC
- Linguistic consultation:** PAUL BARFORD
- Cover illustration:** MACIEJ JÓRDECZKA
- Reviewers:** Mirosław Furmanek (Wrocław), Elena Garcea (Cassino), Maria Gatto (Leicester), Bolesław Ginter (Cracow), Tomasz Herbich (Warsaw), Karla Kroeper (Berlin), Alice Leplongeon (Leuven), Maria Kaczmarek (Poznan), Andrea Manzo (Naples), Arkadiusz Marciniak (Poznan), Henryk Paner (Gdansk), Tomasz Płonka (Wrocław), Włodzimierz Rączkowski (Poznan), Andrzej Rozwadowski (Poznan), Jiří Svoboda (Brno), Philip Van Peer (Leuven), András Zboray (Budapest).
- Editorial office:** INSTITUTE OF ARCHAEOLOGY AND ETHNOLOGY
POLISH ACADEMY OF SCIENCES,
00-140 Warsaw; Al. Solidarności 105
Tel. (4822) 6202881 ext. 154; Fax. (4822) 624 01 00
E-mail: archaeologiapolona@iaepan.edu.pl
Website: <http://journals.iaepan.pl/apolona>

DOI: 10.23858/APa

DOI: 10.23858/APa58.2020

Archaeologia Polona Copyright © 2020 by Institute of Archaeology and Ethnology Polish Academy of Sciences.
All articles in this volume are published in an open access under the CC BY 4.0 license
(<https://creativecommons.org/licenses/by/4.0/>).

PUBLISHED BY
THE INSTITUTE OF ARCHAEOLOGY AND ETHNOLOGY
POLISH ACADEMY OF SCIENCES, WARSAW, POLAND

Typeset: DOBRY SKŁAD Marta Duda
Printed and bound by PARTNER POLIGRAFIA, Białystok

Editorial

The current, 58th volume of *Archaeologia Polona* with the special theme – *The Prehistory of North-East Africa* is devoted to Professor Michał Kobusiewicz on the occasion of the 80th anniversary of his birth. Being aware of Michał's many significant research achievements, we would like through this collection of contributions to especially honour the African chapter of his scientific life. Although he has been engaged in activities in several African countries, over most of this period, his main areas of research were Egypt and Sudan. The Polish contribution to research on the prehistory of NE Africa has a long tradition. This goes back at least to the launch and initial projects of the Combined Prehistoric Expedition (CPE) in Egyptian and Sudanese Nubia in the early 1960s (Wendorf 1965). Michał Kobusiewicz was part of the first wave of Polish prehistorians contributing to the work of the CPE, joining the expedition in 1967. Since then, he has taken part in several dozen African missions resulting in abundant publications greatly increasing knowledge about the past of NE Africa. We may for example mention the articles in *Science* (Wendorf *et al.*, 1976; 1984) or the monograph *The Production, Use and Importance of Flint Tools in the Archaic Period and the Old Kingdom of Egypt* (Kobusiewicz 2015). A detailed account of the African activities and publications of Michał Kobusiewicz are given in the initial chapters of this volume, the first by Romuald Schild – *The African Chapter in the Scientific Life of Professor Michał Kobusiewicz* and the second, compiled by Przemysław Bobrowski – *African Research of Michał Kobusiewicz: Calendar and Bibliography*. Judging by this presentation of the geographical and chronological scope of interests and scientific results, it would perhaps not be an exaggeration to suggest that Michał Kobusiewicz, may justifiably be considered as one of the few individuals that could be considered as a colossus of African archaeology. Fred Wendorf, in his *Desert Days*, describing a field school for Egyptian inspectors writes that Michał was: “regarded as a great teacher and knew more about lithic typology than anyone in the camp, except possibly Schild” (Wendorf 2008: 272).

The papers in this volume honouring Michał Kobusiewicz have been written by his friends, colleagues, acquaintances and also by former students and present collaborators. All consider the archaeology of NE Africa with the same broad chronological and thematic scope as the interests of Professor Kobusiewicz.

The first four papers consider the oldest episodes of hominin presence in NE Africa. Mirosław Masojć and colleagues in their paper *Acheulean Bifaces from Khor Shambat, Omdurman (Sudan), Comparative Studies in the Nubian Context* discuss a recently discovered Palaeolithic assemblage from Omdurman and its statistical comparison with

several other Acheulean sites. The second paper, *The Middle Palaeolithic Assemblage with Bahari Technique from Site 21b in Deir el-Bahari (Western Thebes), Upper Egypt* by Barbara Drobniwicz and Bolesław Ginter presents interesting knapping technique observed in the Egyptian Palaeolithic assemblage from Deir el-Bahari. Marta Osypińska and colleagues focus on the *The PalaeoAffad Project and the Prehistory of the Middle Nile*. The last article in this group, by Donatella Usai, *The Qadan, the Jebel Sahaba Cemetery and the Lithic Collection*, reassesses the chronology and affiliation of the world-famous Sudanese cemetery with the oldest evidence of warfare.

The second group of contributions consider Mesolithic and Neolithic societies both from Egypt and Sudan in the form of a site reports, geophysical surveys and a synthetic papers. Lenka Varadinová and Ladislav Varadin report on *The First Notes on the Second Khartoum Mesolithic Cemetery at Jebel Sabaloka (Sudan)*. Another Mesolithic and Neolithic cemetery from Omdurman, Sudan is presented by Maciej Jórdeczka and colleagues in the next paper, *Neolithic Inhabitants of Khor Shambat I, Sudan*. The third paper in this group, *Comparison of Different Gouge Collections from Central Sudan* by Katarína Kapustka and Małgorzata Winiarska-Kabacińska, involves technological and functional analysis of Neolithic gouges from Sudanese collections. An important Neolithic sites in the Egyptian Desert is discussed by Jacek Kabaciński and a group of co-authors and by Przemysław Bobrowski and colleagues in the next two papers, *Towards Understanding the Late Neolithic of the Egyptian Western Desert: Gebel Ramlah, Site E-16-02* and *The Early Holocene Archaeological Evidence (Site E-05-1) in Bargat El-Shab (Western Desert Egypt)*. It must be said that geophysical surveys have been very rarely undertaken on prehistoric NE African sites, but one is reported by Fabian Welc and Przemysław Bobrowski from the area of Bargat El-Shab in the paper titled: *Results of Geophysical Survey in Bargat El-Shab in Southern Egypt. Insight into the Early Holocene Settlement Pattern of the El Nabta / Al Jerar Interphase*. The last paper in this group, *Recent Research on Neolithic and Predynastic Development in the Egyptian Nile Valley* by Agnieszka Mączyńska, is an important review of the recent results of studies concerning the origins of the Neolithic in Northeastern Africa.

The next group, of two papers, considers the later prehistory of the area. The first of them, *A few Remarks about Cosmetic Palettes from Tell el-Farkha* by Krzysztof Ciałowicz discusses an aspect of this important site in the Nile delta. The second paper, *Flints from the Road: on the Significance of two Enigmatic Stone Tools Found along the Darb el-Tawil* written by Heiko Riemer and Karin Kindermann, discusses the phenomenon of the interpretation of surface lithic finds and the issue of knapped stone artefacts being produced and used in the period after the Stone Age in Africa.

Rock art, one of the beloved subjects of Michał Kobusiewicz's research, is the theme of the fourth and last group of papers in this volume. Friederike Jesse presents her observations from the Sudanese site Zolat el Hammad in the paper titled: *Rock Art and Archaeology – a Short Visit to Zolat el Hammad, Northern Sudan* and Paweł Lech

Polkowski discusses rock art from Egyptian Dakhleh Oasis: *Animal Hill – a Large Prehistoric Rock Art Site CO178 in the Central Dakhleh Oasis, Egypt*.

We believe that the above listed contributions, in many cases based on or discussing the results of Michał Kobusiewicz's research, represent the range of his scientific involvement with Africa, and thus form a tribute to his work. These fifteen papers have been reviewed and improved by a group of international reviewers to whom we owe our gratitude. In alphabetical order the following reviewers were so kind to contribute to improving this volume: Mirosław Furmanek (Wrocław), Elena Garcea (Cassino), Maria Gatto (Leicester), Bolesław Ginter (Cracow), Tomasz Herbich (Warsaw), Karla Kroeper (Berlin), Alice Leplongeon (Leuven), Maria Kaczmarek (Poznan), Andrea Manzo (Naples), Arkadiusz Marciniak (Poznan), Henryk Paner (Gdansk), Tomasz Płonka (Wrocław), Włodzimierz Rączkowski (Poznan), Andrzej Rozwadowski (Poznan), Jiří Svoboda (Brno), Philip Van Peer (Leuven), András Zboray (Budapest).

Finally, the editors would like to express our wish that this volume will reach a broad audience. It was a pleasure to edit and work on the volume to honour the Professor whom we not only respect as a scientist but also admire a lot as a person. On behalf of all the contributors to this volume, the authors and the reviewers, we would like to wish Michał many more successes and achievements in his ongoing work in Africa!

*Przemysław Bobrowski
Mirosław Masojć*

REFERENCES

- Kobusiewicz, M. 2015. *The Production, Use and Importance of Flint Tools in the Archaic Period and the Old Kingdom of Egypt*. Oxford.
- Wendorf, F. 1965. *Contributions to the Prehistory of Nubia*. Dallas, Texas, Fort Burgwin Research Center and Southern Methodist University Press.
- Wendorf, F. 2008. *Desert Days: My Life As a Field Archaeologist*. Dallas, Texas, Southern Methodist University Press.
- Wendorf, F., Schild, R., Close, A. E., Donahue, D. J., Jull, A. J. T., Zabel, T. H., Wieckowska, H., Kobusiewicz, M., Issawi, B. and el Hadidi, N. 1984. New radiocarbon dates on the cereals from Wadi Kubbania. *Science* 225(4662): 645–646.
- Wendorf, F., Schild, R., Said, R., Haynes, C. V., Gautier, A. and Kobusiewicz, M. 1976. The Prehistory of the Egyptian Sahara. *Science* 193(4248): 105–114.

CONTENTS

Editorial	1
-----------------	---

SPECIAL THEME:
PREHISTORY OF NORTH-EAST AFRICA
VOLUME DEDICATED TO PROF. MICHAŁ KOBUSIEWICZ
ON HIS 80th BIRTHDAY

The African Chapter in the Scientific Life of Professor Michał Kobusiewicz <i>Romuald Schild</i>	9
African Research of Michał Kobusiewicz: Calendar and Bibliography <i>Przemysław Bobrowski</i>	17
Acheulean Bifaces from Khor Shambat, Omdurman (Sudan), Comparative Studies in the Nubian Context <i>Mirosław Masojć, Amel Hassan Gismallah, Grzegorz Michalec, Andrzej Gałaś and Maciej Jórdeczka</i>	39
The Middle Palaeolithic Assemblage with Bahari Technique from the Site 21b in Deir el-Bahari (Western Thebes), Upper Egypt <i>Barbara Drobniewicz and Bolesław Ginter</i>	63
The PalaeoAffad Project and the Prehistory of the Middle Nile <i>Marta Osypińska, Piotr Osypiński, Marek Chłodnicki, Michał Kuc, Paweł Wiktorowicz and Robert Ryndziejewicz</i>	79
The Qadan, the Jebel Sahaba Cemetery and the Lithic Collection <i>Donatella Usai</i>	99
The First Notes on the Second Khartoum Mesolithic Cemetery at Jebel Sabaloka (Sudan) <i>Lenka Varadzinová and Ladislav Varadzin</i>	121
Neolithic Inhabitants of Khor Shambat 1, Sudan <i>Maciej Jórdeczka, Łukasz Maurycy Stanaszek, Przemysław Bobrowski, Marek Chłodnicki and Iwona Sobkowiak-Tabaka</i>	135

Comparison of Different Gouge Collections from Central Sudan <i>Katarína Kapustka and Małgorzata Winiarska-Kabacińska</i>	165
Towards Understanding the Late Neolithic of the Egyptian Western Desert: Gebel Ramlah, Site E-16-02 <i>Jacek Kabaciński, Agnieszka Czekaj-Zastawny, Hebatallah A. A. Ibrahim and Jakub Mugaj</i>	179
The Early Holocene Archaeological Evidence (Site E-05-1) in Bargat El-Shab (Western Desert Egypt) <i>Przemysław Bobrowski, Maria Lityńska-Zajac, Marta Osypińska and Maciej Jórdeczka</i>	195
Results of Geophysical Survey in Bargat El-Shab in Southern Egypt. Insight into the Early Holocene Settlement Pattern of the El Nabta / Al Jerar Interphase <i>Fabian Welc and Przemysław Bobrowski</i>	221
Recent Research on Neolithic and Predynastic Development in the Egyptian Nile Valley <i>Agnieszka Mączyńska</i>	235
A few Remarks about Cosmetic Palettes from Tell el-Farkha <i>Krzysztof M. Ciałowicz</i>	245
Flints from the Road: on the Significance of two Enigmatic Stone Tools Found along the Darb el-Tawil <i>Heiko Riemer and Karin Kindermann</i>	257
Rock Art and Archaeology – a Short Visit to Zolat el Hammad, Northern Sudan <i>Friederike Jesse</i>	275
Animal Hill – a Large Prehistoric Rock Art Site CO178 in the Central Dakhleh Oasis, Egypt <i>Paweł Lech Polkowski</i>	289

DISCUSSIONS AND CRITICISM

Green Saharas, Grey Markets: Commercial Exploitation of North African Prehistory, an Overview <i>Paul M. Barford</i>	311
---	-----

BOOK REVIEWS

Iwona Sobkowiak-Tabaka, <i>Rozwój społeczności Federmesser na Nizinie Środkowoeuropejskiej</i> [The Development of Federmesser Communities on the Central European Plain], Warszawa 2017 (<i>Andrzej Wiśniewski</i>)	337
--	-----



Photo: M. Jórdeczka

Professor Michał Kobusiewicz at Meroe (Sudan, 2012)

The Middle Palaeolithic Assemblage with Bahari Technique from the Site 21b in Deir el-Bahari (Western Thebes), Upper Egypt

Barbara Drobnowicz^a and Bolesław Ginter^b

In the 1970s, the authors of this paper explored the Site 21b, situated in the north-western fringe of the Deir el-Bahari Valley, in the Theban Massif (Upper Egypt). Based on the significant variability in the state of preservation of artefacts' surfaces, six series of artefacts were identified, corresponding to the Middle Palaeolithic and Pre-Dynastic assemblages. The most detailed analysis was performed for the inventory of the series 2, which was ascribed to a previously unknown industry with the Levallois technique and Mousterian discoidal cores. This industry is also characterised by an occurrence of a specific manner of obtaining flakes from globular and thick, flattened, lens-like nodules, abundantly occurring in the local Lower Eocene limestone. This manner of flake production was called the Bahari technique. Due to the occurrence of sidescrapers, Mousterian points, denticulated and notched pieces, the chronology of this series was determined as Middle Palaeolithic.

KEY-WORDS: Theban Hills, Middle Palaeolithic, Bahari technique

INTRODUCTION

In 1975 and 1976, the authors of this paper, at that time active researchers at the Institute of Archaeology, Jagiellonian University in Cracow, conducted an archaeological survey on the fringe of the Deir el-Bahari Valley, in the area of the Theban Gebel (Fig. 1). These studies were carried out within a scholarship granted by the Egyptian Government and were included into the so-called Deir el-Bahari Project executed under the auspices of the Polish Centre of Mediterranean Archaeology, University of

^a Institute of Archaeology, Jagiellonian University, Gołębia Street 11, 31-007 Cracow, Poland; e-mail: barbara.drobnowicz@gmail.com; ORCID: 0000-0002-0524-232X

^b Institute of Archaeology, Jagiellonian University, Gołębia Street 11, 31-007 Cracow, Poland; e-mail: bolgint38@wp.pl; ORCID: 0000-0001-5072-075X

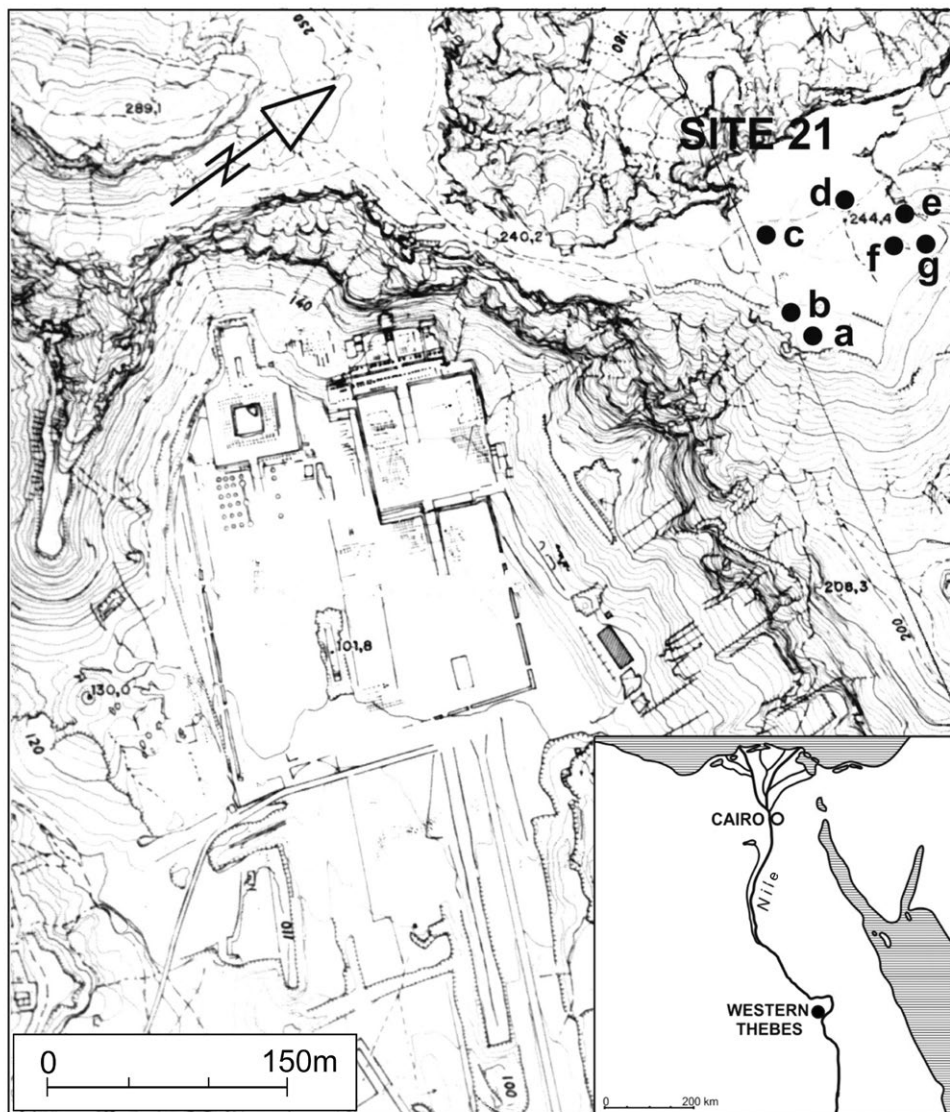


Fig. 1. Topography of the Site 21 in the context of the Deir el-Bahari Valley.
Graphic design: The Egyptian Antiquities Organization with changes by U. Socha.

Warsaw. The Project aimed at tracing the process of inhabiting the valley itself as well as its closest surroundings since the prehistoric times until the Dynastic Period, with particular attention paid to the times preceding the latter. Submitting this paper to be published in the Jubilee Book dedicated to Professor Michał Kobusiewicz should be seen as an expression of our great fellow feeling for our colleague and friend and respect for his outstanding achievements in studies upon the prehistory of North-Eastern Africa.

As we know, an interest in the prehistory of the Western Thebes region has got a long history; since its beginnings reach as far back as to the second half of the 19th century. The first expeditions in search of lithic materials and their interpretations were the work of such scholars as A. Arcelin (Arcelin 1869: 136–407; 1870: 155–189) and A. Pitt-Rivers (Pit-Rivers 1882). Also noteworthy are systematic field studies carried out at the end of the 19th century and beginning of the 20th century by G. Schweinfurth, who, apart from collecting prehistoric assemblages, distinguished and localised a number of archaeological sites, and created a topographic map of them (Schweinfurth 1903: 798–838). In the 1930s, R. Cotteville-Giraudet brought to light the issue of the occurrence of prehistoric sites at various altitudes on the Theban Gebel, connecting this phenomenon with the differentiation of their age. He was also the first researcher who identified the Lower Palaeolithic artefacts from this region (Cotteville-Giraudet 1933). At the same time K. S. Sandford and W. J. Arkell presented their concept of the occurrence of four major Pleistocene alluvial terraces in this part of the Nile Valley, distinguishing the Middle Palaeolithic artefacts amongst other flint materials (Sandford and Arkell 1933). Studies upon the region under scrutiny became more intense once again in the 1960s, and even more in the 1970s. This was associated with an activity of the French-Egyptian expedition headed by Ch. Desroches-Noblecourt, with the participation of F. Debono, which mostly aimed at searching for graffiti on rocks as well as identification and topographic location of prehistoric sites in the area of the Theban Hills (Debono 1972). A major role in shaping the current viewpoints on the geology and prehistory of this part of Egypt was played by field research conducted within the activity of the Combined Prehistoric Expedition headed by F. Wendorf, R. Said and R. Schild. Their numerous publications addressing the issues of stratigraphy, age and dynamics of the Pleistocene sediments origins, evolution of the Nile Valley, as well as identification of new taxonomic units and development of the Palaeolithic cultures are still current, constituting an excellent point of reference for further studies (Said *et al.*, 1970; Said 1975).

In the winter season of 1973/74, the researchers of the Institute of Archaeology, Jagiellonian University in Cracow, J. K. Kozłowski and J. Śliwa, commenced a field survey which led to the recognition of the geology, stratigraphy and topography of the Deir el-Bahari Valley and its closest surroundings. They also recorded a dozen or so concentrations of flint and stone materials of various ages (Drobnowicz *et al.*, 1976: 11–26).

In the following season, in which the authors of this paper joined the expedition, a few selected sites were explored entirely or partly, and other concentrations of artefacts visible on the ground surface were recognised. Assemblages found within those concentrations varied in terms of chronology and cultural affiliation, and were dated within wide time frames from the Middle Palaeolithic until the Dynastic Period (Heflik and Kozłowski 1977: 7–30).

THE SITE 21

Our particular attention was drawn by the Site 21, situated in the north-western part of the valley fringe, lying at an altitude of *c.* 244 m a.s.l., and *c.* 150 m above the valley bottom. The site embraces a fragment of a widespread structural platform of the Theban limestone of the Lower Eocene age, formed by erosion processes (Drobniewicz and Ginter 2019: 106; Fig. 1). Its surface is covered with a thin layer of silty sands of yellowish colour, beneath which there occurs the limestone bedrock cut through by tectonic and erosive cracks. Within the boundaries of the site a few quite well isolated concentrations of flint artefacts were discovered (Fig. 2), amongst which one, namely the concentration no. 21 b, was entirely explored. This feature was almost oval in shape and had dimensions of *c.* 30 × 20 meters. Artefacts found within it lay exclusively on its surface; therefore, the exploration



Fig. 2. Deir el-Bahari. The Site 21b, view from the west. Photo: B. Ginter.

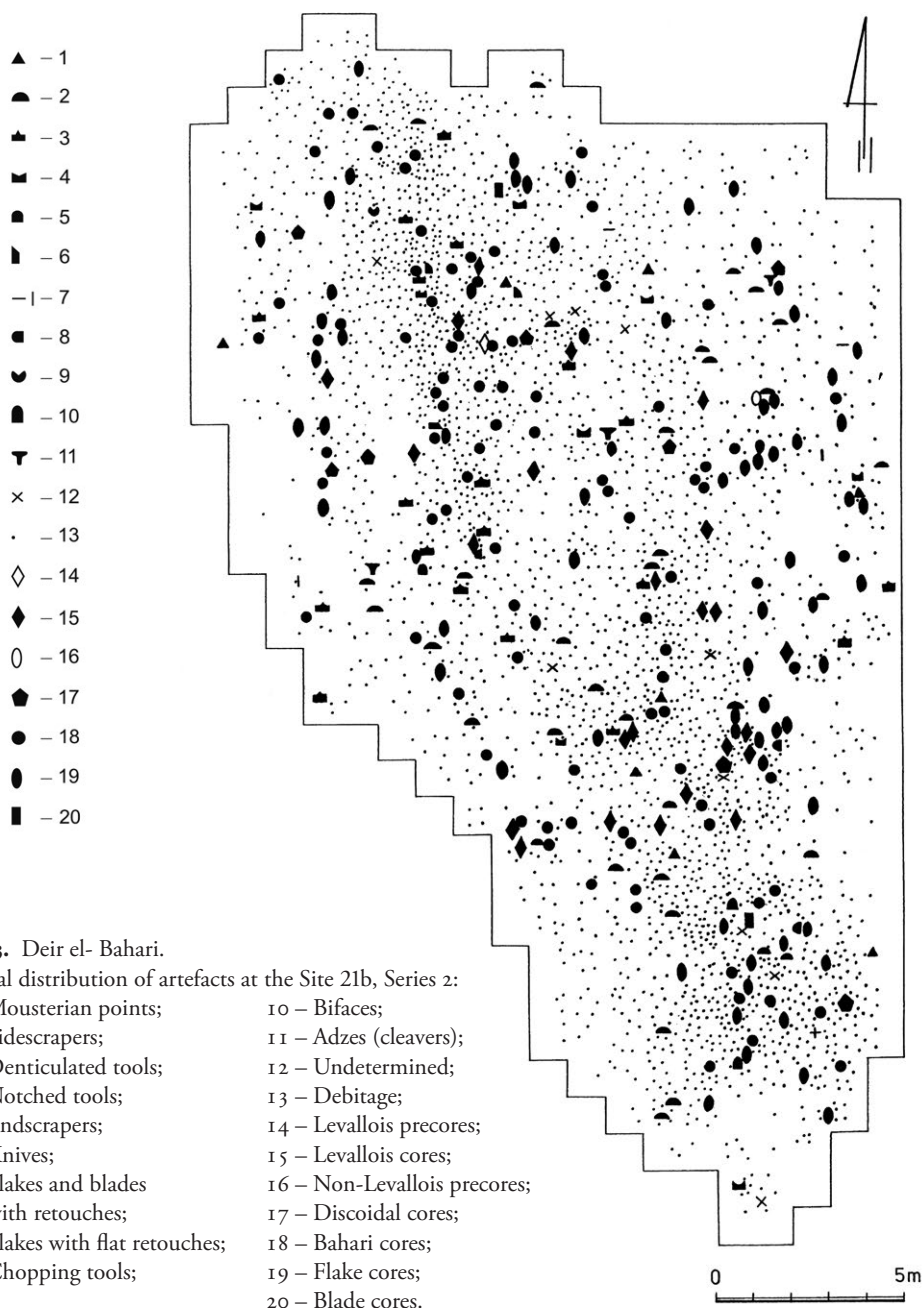


Fig. 3. Deir el- Bahari.

Spatial distribution of artefacts at the Site 21b, Series 2:

- | | |
|---------------------------------------|------------------------------|
| 1 - Mousterian points; | 10 - Bifaces; |
| 2 - Sidescrapers; | 11 - Adzes (cleavers); |
| 3 - Denticulated tools; | 12 - Undetermined; |
| 4 - Notched tools; | 13 - Debitage; |
| 5 - Endscrapers; | 14 - Levallois precoces; |
| 6 - Knives; | 15 - Levallois cores; |
| 7 - Flakes and blades with retouches; | 16 - Non-Levallois precoces; |
| 8 - Flakes with flat retouches; | 17 - Discoidal cores; |
| 9 - Chopping tools; | 18 - Bahari cores; |
| | 19 - Flake cores; |
| | 20 - Blade cores. |

Graphic design: U. Socha.

was reduced to gathering them thoroughly, preceded by recording the position of the most important specimens (cores and tools) in a two-dimensional coordinate system, while less significant materials were captured within a network of squares superimposed on the investigated area (Fig. 3).

Amongst the assemblage of over ten thousand of knapped stone artefacts, the investigators at first identified three series of artefacts (Drobniwicz *et al.*, 1976: 24), and after exploration of the further part of this concentration, a total of six series of artefacts were distinguished, corresponding with taxonomic units varied in terms of their chronology and cultural affiliation. With regard to the planigraphy, the individual series of artefacts overlapped one another, which made it impossible to separate them on spatial grounds. Due to this, we decided to perform a selection based on the nature and state of preservation of the artefacts surfaces, taking into consideration their highly variable and relatively distinguishable degree of damage, polishing or patination, as well as the colour of patina and the state of preservation of their edges. Employing a distinctive state of preservation as the major criterion allowed us to distinguish six assemblages significantly differing one from another in terms of both techniques of preparation and exploitation of cores, as well as an occurrence of particular types of tools and their frequencies.

Series 1

Artefacts of the Series 1 are characterised by strongly damaged, weathered surfaces, smoothed edges and a thick layer of patina. Their colour is dark orange to reddish. Amongst cores and debitage the Levallois technique prevails (IL = 32)¹, reduced almost exclusively to production of flakes, and absolutely lacking points. Unretouched Levallois tools are considerably more frequent than retouched ones (ILty = 79), with predominant sidescrapers and an occurrence of an almond-shaped, slightly elongated and asymmetric biface. We believe that this series represents the Middle Palaeolithic phase of the Acheulean Culture with abundantly developed Levallois technique.

Series 2

The Series 2 was identified based on the occurrence of a specific, thick patina, deep red in colour (Fig. 4). This patina was not the only unique element characterising this series. It was also distinguishable from other assemblages due to an extremely interesting technique of core exploitation, named by the authors as the Bahari technique. The spatial distribution of artefacts is illustrated in Fig. 3. The Series 2 is considered the most significant and is the major subject of our paper, and a detailed description will be given below, following the discussion of all the other series.

¹ All indices given in this paper are quoted after Bordes, F. 1953. Essai de Classification des industries "moustériennes". *Bulletin de la Société préhistorique française*: 50: 457–466.

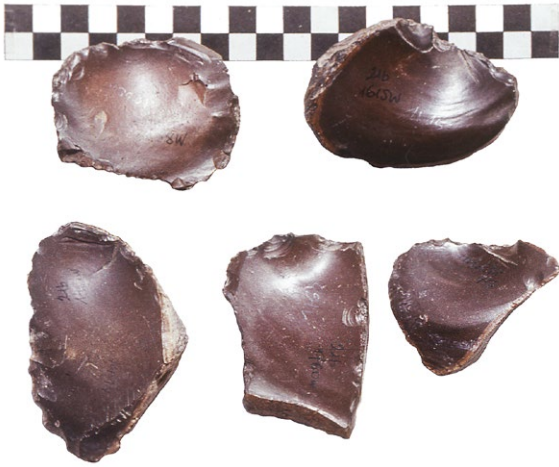


Fig. 4. Deir el-Bahari, the Site 21b. Bahari cores. Photo: B. Ginter.

Series 3 and 4

Surfaces of artefacts of the Series 3 and 4 are smooth, opaque and covered with patina, the layer of which is not very thick. The colour of the patina is various shades of beige (Series 3), or beige-orange changing into gently reddish (Series 4) with visible blackish varnish. Edges of the artefacts are slightly smoothed, so are the ridges between the scars. Both of these series share many common traits, in respect of both toolset as well as flaking techniques. The Levallois index is medium high (IL = 12 and 16, respectively), with a visible predominance of flakes and flake cores, but with a high contribution of points and blades, and a very low frequency of Mousterian discoidal cores and flakes detached from them. A relatively numerous group of artefacts is represented by a specific variant of Levallois cores typical of the so-called Nubian Mousterian distinguished in the Wadi Halfa region (Marks 1968a). With regard to both of the series under discussion, unretouched Levallois tools prevail in number over the retouched ones (IL_{ty} = 61 and 78, respectively). The latter are represented mainly by sidescrapers of various types, denticulated and notched pieces, with a small contribution of endscrapers and few burins. Noteworthy is the occurrence of a single biface within the Series 3, which has got its closest analogues in the Mousterian assemblages with Levallois technique related to the above-mentioned Nubian Mousterian from the borderland between Egypt and Sudan.

Series 5

The Series 5 comprises artefacts of smooth and slightly shiny surfaces, covered entirely with thin black desert patina; the edges of the artefacts are very weakly smoothed. The Levallois technique is visible though poorly manifested (IL = 4), whereas, the technique employing the Mousterian discoidal core is very strongly accentuated, which is legible in both cores as well as debitage. The blade technique also played a significant

role in this series (Ilam = 17), with a visible predominance of single platform cores over the double platform ones and cores with changed orientation. The flake technique, however, dominated, and was recorded in all its variants. In spite of the low technical index, the Levallois typological index is quite high due to a relatively high contribution of Levallois flakes, blades and points (Ilty = 41). Retouched tools are represented mostly by lateral, transversal and oblique sidescrapers, denticulated and notched pieces, as well as numerous endscrapers and burins of various types. Noteworthy is a relatively high index of the Upper Palaeolithic tools (IPs = 27). While searching for assemblages of similar traits, the authors' attention was drawn by materials discovered in the Wadi Halfa region and described by A. E. Marks, who used them as providing the grounds for distinguishing a new cultural unit, named the Khormusan Culture (Marks 1968b).

Series 6

The Series 6, undoubtedly much later than those discussed above, comprises artefacts with "fresh" surfaces, practically not affected by patina, which in general has not changed the colour of the processed flint concretions. If a patina occurs, its colour is grey-beige and it covers only fragments directly exposed to the activity of atmospheric factors. The edges of these artefacts are sharp, without any traces of smoothing. This series is represented exclusively by flake cores of various types, including cores with changed orientation, as well as quite numerous blade cores, with a small contribution of cores for blades and flakes. A frequent phenomenon was the reutilisation of cores and precores from older series. Tools are not very frequent (3% of all artefacts), with a predominance of denticulated and notched pieces, and a significantly lower contribution of endscrapers and burins. They are rather large and roughly elaborated, which is typical of workshop sites. In terms of their state of preservation and the nature of cores and debitage they mostly resemble the Pre-Dynastic assemblages, especially those of the Naqada Culture, accompanying a great number of sites of this cultural unit in the foothills of the Theban Hills, close to the boundary of the present cultivation zone. The series in question is most likely a relic of a flint workshop of the above-mentioned culture.

Artefacts of the Series 2

In our opinion, the most interesting of these six groups is the above-mentioned series 2. This was distinguished based on the characteristic thick patina of dark deep red colour, sometimes changing into reddish-purple (Fig. 4). Surfaces of the artefacts of this series are very smooth, strongly polished and shiny. The edges are blunt, smooth and rounded. In cavities, traces of black desert varnish are noticeable.

Raw materials used for production of the tools of this series were flint nodules, mostly of large dimensions, abundantly occurring in the local Lower Eocene limestone of the Theban Massif. They were easily accessible, lying in large numbers over the surfaces of erosion planes, as well as within sediments covering the slopes of the Deir



Fig. 5. Deir el-Bahari.
Flint nodules in the northern
wall of the Valley.
Photo: B. Ginter.

el-Bahari Valley. These nodules could have also been easily prised out of the walls of erosion or tectonic cracks, such as those that cut through the ground of the Site 21. Having analysed the vertical diversification of the Theban limestone, the authors noticed certain differences in sizes and shapes of flint nodules. Within the levels above the altitude of 220 m a.s.l. one can encounter large specimens of dimensions ranging from a dozen or so up to more than 20 cm in diameter. They are irregular in shape, massive, sometimes nearly globular or oval-shaped (Fig. 5; Tawfik *et al.*, 2011: 520).

The inventory of the series discussed here comprises 3 064 knapped flint artefacts, including: 4 precores (0.1%), 204 cores (6.7%), 2 575 flakes and chips (84.1%), 64 blades (2.1%), 121 unretouched Levallois tools (3.9%) and 96 retouched tools (3.1%). Such a composition is typical of sites where the entire flint processing cycle took place, starting from the preparation of precore forms, through the exploitation of the cores to obtain blanks, and ending with ultimate shaping of tools.

One of the characteristic traits of this assemblage is a great variability in manners of preparation and exploitation of cores. A significant though not very numerous group is represented by Levallois cores of various types (20 specimens – 10%), with a predominance of classical single platform flake cores. The contribution of discoidal and sub-discoidal cores of the Mousterian type is also very visible (16 specimens – 8%). The most frequent are common flake cores, single and double platform ones, as well as cores with changed orientation (59 specimens – 30%). The percentage of cores for flakes and blades is small (7 specimens – 3.5%), whereas blade cores occur only very sporadically (2 specimens – 1%). All of the groups of cores mentioned above bear clear traces of initial preparation preceding the process of exploitation. The latter was aimed mainly at production of flakes, and sometimes blades though to much smaller extent. Particularly with regard to Levallois cores, the initial treatment was usually very thorough, in some cases even meticulous.



Fig. 6. Flint nodules.
Photo: B. Ginter.



Fig. 7. Exposure of the Theban limestones with protruding chert nodules.
Photo: B. Ginter.

A separate group of cores, the most numerous (91 specimens – 47%), which we have decided to highlight in this paper, is represented by specimens showing no traces of any initial treatment, always made from globular or slightly flattened, usually very regular nodules, sometimes in a shape resembling a very thick lens or a strongly flattened cone (Fig. 6). These would have been found lying loose on a hard substrate constituted by eroded bedrock (Fig. 7) or within the limestone rubble of the slopes surrounding the valley. These cores are varied in shape, with dimensions from slightly exceeding 6 cm up to c. 12 cm. In shape they resemble a concave-convex or flat-convex lens, and their flaking surface is usually formed by a single scar of a previously detached flake (Fig. 8: 1–3). The striking platforms, sides and backs of such cores are covered with cortex and they wear no traces of any initial preparation preceding the exploitation. The exploitation always started from detaching a thick, more or less regular flake entirely cortical, using a hard hammer, and struck off at a selected point of the nodule circumference. Then the successive flake was detached, nearly always in the same direction as the previous

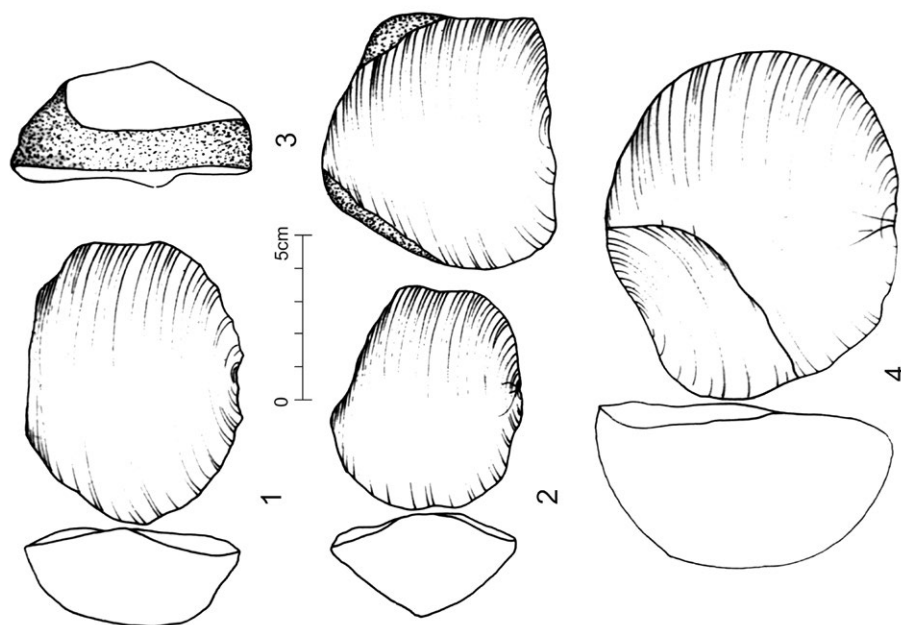


Fig. 8. Deir el-Bahari. Bahari cores. Drawn: B. Drobniwicz.

one. Afterwards one or two, at most, flakes were struck off, usually in the same direction as the former ones. Only sporadically was a different striking point on the nodule circumference selected (Fig. 8: 4). Thus, the technique of core processing was very simple, not to say primitive, and it aimed at obtaining no more than a few massive, thick flakes, rounded or oval-shaped, sometimes semi-circular, from one core. Due to its specific nature and distinctness from other currently identified manners of core processing, we called it the Bahari technique, after the Deir el-Bahari Valley.

There were recorded 2 732 flakes and blades, being the result of preparation, exploitation and rejuvenation of cores. A significant role is played by 121 Levallois flakes, blades and points, with a considerable predominance of the former ones (98 specimens), the number of which is much greater than it could be anticipated based on the number of cores. At least a dozen or so Levallois flake cores were transformed in the course of exploitation or through retouching into specimens of a later series, six in particular, to which they were consequently included. The Levallois technical index is relatively low ($IL = 4.4$). A further 153 flakes can be linked to the Levallois flint processing technique. They come from the advanced or final phases of forming the flaking surface. Another 123 flakes were detached from discoidal cores of the Mousterian type, supporting a hypothesis of their intense exploitation.

Within the debitage, common flakes prevail (2 078 specimens) over all other groups of waste products coming from all phases of the operational process. Relatively numerous are entirely cortical (472 specimens) or partly cortical flakes (1 442 specimens).

Undoubtedly, this indicates a thorough initial preparation of cores before they were explored, starting from raw nodules processed on the spot, ending with obtaining desirable blanks. The initial treatment was employed less frequently in processing of a few blade cores, since amongst 64 identified blades almost all of them were covered with cortex to a smaller (38 specimens) or greater extent (15 specimens), while only nine blades were entirely cortical.

A separate group is constituted by 193 flakes detached from the above-mentioned Bahari cores. Amongst them, 49 specimens are entirely cortical flakes with usually strongly convex dorsal sides, which results from the type of employed nodules. In general, they are thick and massive, and their thickness sometimes exceeds 3 cm (Fig. 10: 1, 4). A further 13 flakes were transformed into tools, whereas another dozen or so bear traces of tool treatment and are covered with patina, which indicates that they were used in later chronological periods. Most likely another few, possibly more than ten, artefacts were transformed with retouch to such an extent that their identification is impossible at the moment. Flakes bearing scars of previously detached specimens on their dorsal sides are clearly more numerous. There were recorded 144 examples of such artefacts, while a further 13 were transformed into tools, and another 12 have got younger scars of secondary tool treatment. About 90% of these flakes bear on their dorsal sides scars of specimens detached in the same direction (Fig. 9: 1, 2; Fig. 10: 2). With regard to slightly more than 10% of the artefacts, the scars on their dorsal sides are oblique or transverse to their detachment direction (Fig. 10: 3). Usually, they are covered with cortex on their entire circumference (Fig. 9: 1, 2; Fig. 10: 2), sometimes the cortex is present only on $\frac{2}{3}$ or $\frac{1}{2}$ of their circumference (Fig. 10: 3). Diameters of flakes range from 6.2 to 11.5 cm, while their thickness is between 2.0 and 2.5 cm, in few cases up to *c.* 3 cm. In total, there were identified 244 flakes of the Bahari type, including those transformed into tools, which gives an approximate number of three flakes per 1 core.

Retouched tools were represented by 96 specimens, which confronted with the number of 121 unretouched Levallois flakes, blades and points gives a relatively high Levallois typological index ($I_{lty} = 55.8$). A scarce though significant group of artefacts is represented by Mousterian points (8 specimens), which occurred exclusively in the assemblage of this series. The most numerous are sidescrapers (47 specimens), mostly single ones (33 specimens): oblique, transverse and lateral. Significantly less frequent are bilateral sidescrapers (13 specimens), including convergent specimens of the dejeté type. Quite numerous are also denticulated pieces of various types (13 specimens), as well as notched tools (8 specimens), including Clactonian notches formed with single blows. Noteworthy is an occurrence of a single endscraper made from a flake and a single perforator made from an elongated flake. This toolset is complemented by four knife-like tools and four flakes and blades with marginal retouch, as well as two flakes with widespread surface retouch. A separate category is represented by adzes, namely

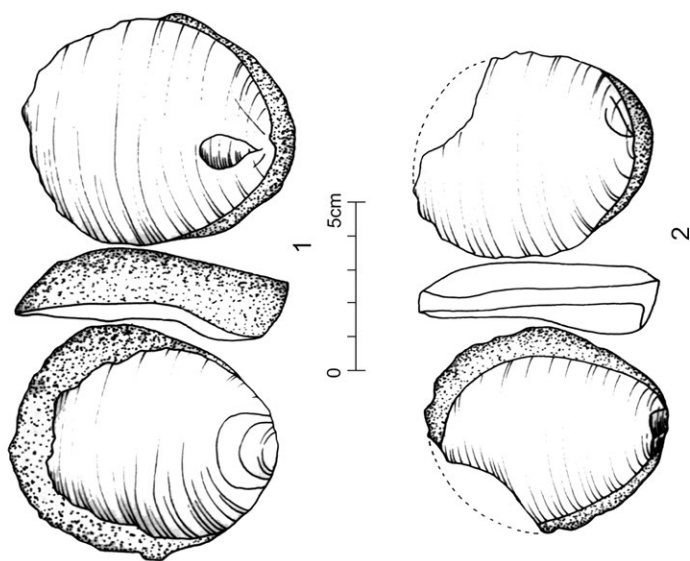


Fig. 9. Deir el-Bahari. Bahari flakes. Drawn: B. Drobniwicz.

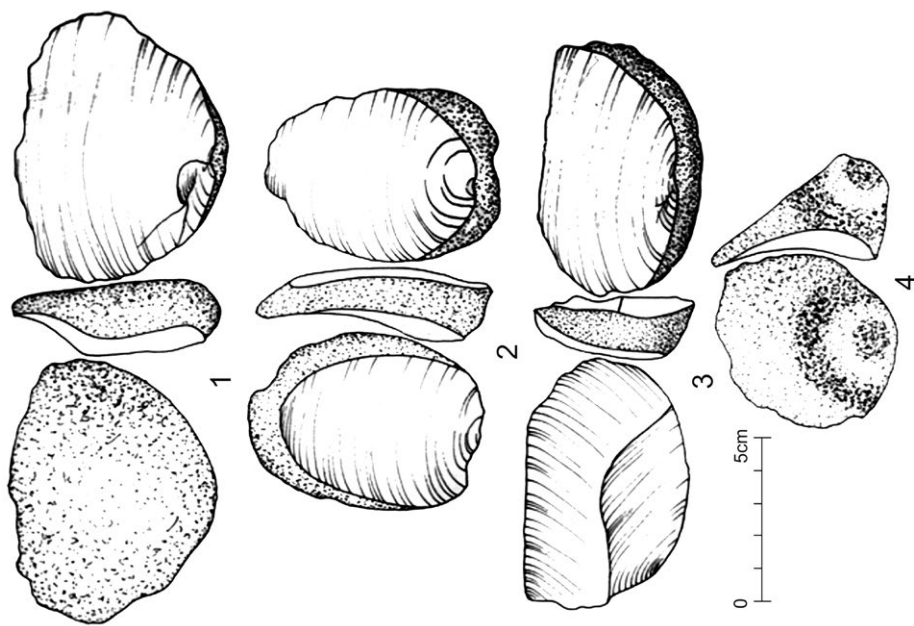


Fig. 10. Deir el-Bahari. Bahari flakes. Drawn: B. Drobniwicz.

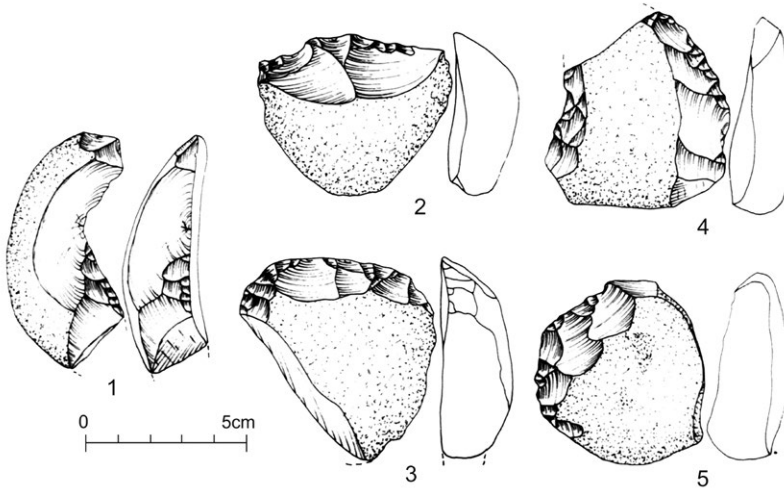


Fig. 11. Deir el-Bahari. Retouched tools made from Bahari flakes. Drawn: B. Drobniewicz.

cleavers, and two small bifaces with unprepared, cortical bases, most likely associated with this series as well. It must be stressed that among the flakes there were no forms coming from bifacial treatment.

About 30% of the retouched tools of this series were made from flakes of the Bahari type. These were mostly sidescrapers (Fig. 11: 3–5), notched (Fig. 11: 1) and denticulated pieces (Fig. 11: 2). Having analysed these three groups of tools, a diversified frequency of the Bahari flakes and their semi products can be noticed. Thus, they were used for production of 70% of all denticulated pieces, 37% of notched tools and 25% of sidescrapers. This indicates various preferences of their makers, the reasons of which remain unknown.

CONCLUSION

The Middle Palaeolithic nature and consequently, chronology of the assemblage of the Series 2 from the Site 21b is indicated unambiguously by several factors. On the one hand these are the technological features (Levallois cores and tools of various types, Mousterian discoidal cores and flakes from their processing), and on the other hand, the typological context of this series (Mousterian points, numerous sidescrapers, denticulated and notched pieces, lack of Upper Palaeolithic tools). This is also confirmed by the relatively older age of this assemblage when compared with those of the series 3 and 4 found at this site and representing Mousterian assemblages with Levallois

technique and cores of the Nubian type, which is undoubtedly evidenced by the state of preservation and the order of scars visible on dorsal sides of many artefacts. Until now, there are no unambiguous analogues for our assemblage amongst the Middle Palaeolithic industries from the territory of Egypt.

Elements of the Bahari technique are also encountered, though sporadically, at other sites in the Deir el-Bahari region, always accompanied by the Middle Palaeolithic forms. It is very likely that they occurred in locations where appropriate flint nodules were available. These nodules could have been exploited using the simple though effective technique that was discussed above. Employing such a technique suggests that the flintknappers and users of flint products were very creative and capable of adapting particular flint processing procedures to the available local raw materials.

Translated by Agnieszka Klimek

REFERENCES

- Arcelin, A. 1869. Lettre à M. de Mortillet: L'âge de la pierre en Égypte. *Revue Archéologique*, Série 2: 136–407.
- Arcelin, A. 1870. L'industrie primitive en Égypte et en Syrie. Mission Scientifique de Ministère de l'Instruction Publique 1868–69. Rapport au Ministre. *Mâcon* 9: 155–189.
- Cotteville-Giraudet, R. 1933. L'Égypte avant l'histoire. *Bulletin de l'Institut Français d'Archéologie Orientale*: 3: 1–168.
- Debono, F. 1972. Gisements préhistoriques de la Montagne thébaine. *Graffiti de la Montagne thébaine*: 1: 3. Le Caire.
- Drobniwicz, B., Ginter, B. and Kozłowski, J. K. 1976. Topographie préhistorique du cirque de Deir el-Bahari. *Deir el-Bahari 1. Zeszyty Naukowe Uniwersytetu Jagiellońskiego. Prace Archeologiczne* 24: 11–26.
- Drobniwicz, B. and Ginter, B. 2019. Deir el-Bahari, Upper Egypt. In M. Chłodnicki and P. L. Polkowski (eds), *When the Sahara was green. Polish archaeological research on the prehistory of North Africa*, 105–108. Poznań.
- Heflik, W. and Kozłowski, J. K. 1977. Remarques sur la caractéristique géologique, minéralogique et pétrographique des sédiments du Nil dans le Cirque de Deir el-Bahari. *Deir el-Bahari 2. Zeszyty Naukowe Uniwersytetu Jagiellońskiego. Prace Archeologiczne* 25: 7–30.
- Marks, A. E. 1968a. The Mousterian Industries of Nubia. In F. Wendorf (ed.), *The Prehistory of Nubia* 1: 194–314. Dallas, Texas.
- Marks, A. E. 1968b. The Khormusan: An Upper Pleistocene Industry in Sudanese Nubia. In F. Wendorf (ed.), *The Prehistory of Nubia* 1: 315–391. Dallas, Texas.
- Pitt Rivers, A. 1882. On the discovery of chert implements in stratified gravel in the Nile Valley near Thebes. *The Journal of the Anthropological Institute of Great Britain and Ireland* 11: 382–400.
- Said, R. 1975. The geological evolution of the River Nile. In F. Wendorf and A. E. Marks (eds), *Problems in Prehistory Northern Africa and the Levant*, 1–44. Dallas, Texas.
- Said, R., Wendorf, F. and Schild, R. 1970. The Geology and Prehistory of the Nile Valley in Upper Egypt. *Archaeologia Polona* 12: 19–42.

- Sanford, K. S. and Arkell, W. J. 1933. Palaeolithic Man in the Nile Valley in Nubia and Upper Egypt. *The University of Chicago Oriental Institute Publications* 17.
- Schweinfurth, G. 1903. Steinzeitliche Forschungen in Ober Ägypten. *Zeitschrift für Ethnologie* 35: 798–838.
- Tawfik, H. A., Zahran, E. K., Abdel-Hammed, A. T. and Maejima, W. 2011. Mineralogy, petrography, and biostratigraphy of the Lower Eocene succession at Gebel El-Qurn, West Luxor, Southern Egypt. *Arabian Journal of Geosciences* 4: 520.